

THE SALTWELL

3 bedroom home



HIGHVIEW

BLAYDON



CGIs are for illustration purposes only, external finishes and features may vary

KEELMAN
HOMES

THE SALTWELL

3 bedroom home

Ground Floor

Kitchen/Dining

5496 x 3138 18'0" x 10'4"

Lounge

4123 x 4494 13'6" x 14'9"

WC

1430 x 1350 4'8" x 4'5"

First Floor

Bedroom 1

3664 x 3000 12'0" x 9'10"

Bedroom 2

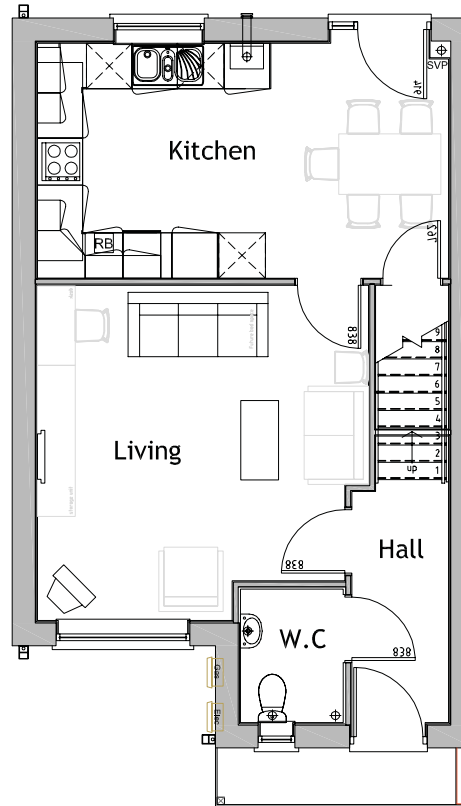
3644 x 2800 12'0" x 9'2"

Bedroom 3

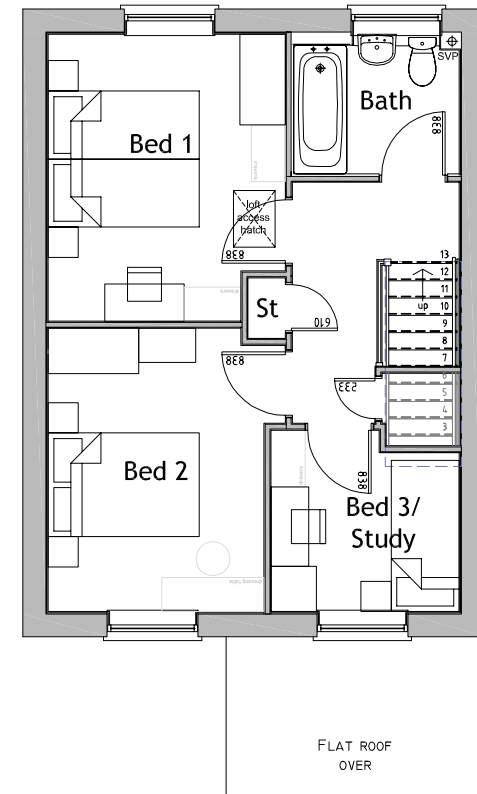
2400 x 2400 7'10" x 7'10"

Bathroom

2192 x 1847 7'2" x 6'1"



Ground Floor



First Floor

Floorplans are for illustration purposes only. All sizes are approximate and may be subject to some change through the construction process. Information is subject to change, properties may be a mirror image of the floor plan shown and materials may differ – please ask Keelman Homes for details of your chosen plot.