

THE WHICKHAM

2 bedroom home



HIGHVIEW

BLAYDON



KEELMAN
HOMES

CGIs are for illustration purposes only, external finishes and features may vary.

THE WHICKHAM

2 bedroom home

Ground Floor

Lounge

3789 x 4499 12'5" x 14'9"

Kitchen

4905 x 3438 16'1" x 11'3"

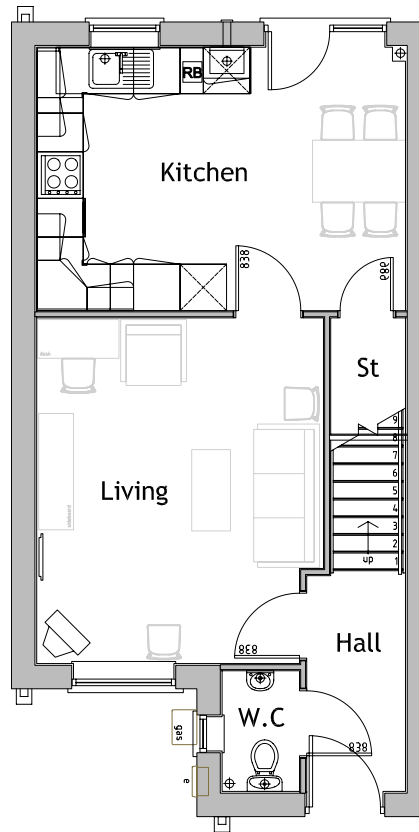
First Floor

Bedroom 1

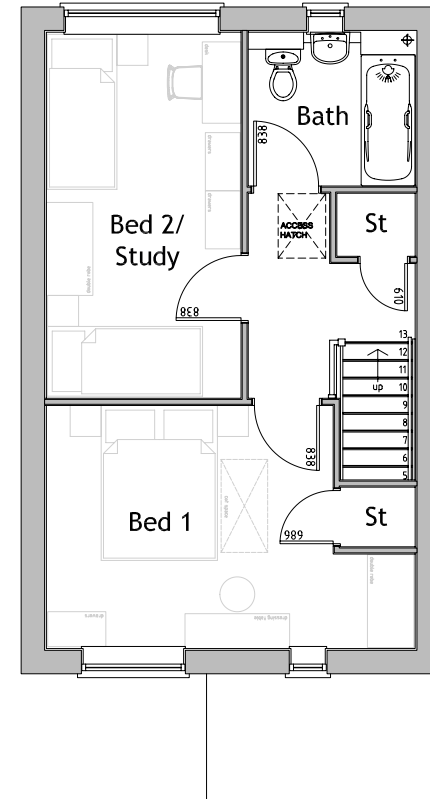
3793 x 3175 12'5" x 10'5"

Bedroom 2

2550 x 4762 8'4" x 15'7"



Ground Floor



First Floor

Floorplans are for illustration purposes only. All sizes are approximate and may be subject to some change through the construction process. Information is subject to change, properties may be a mirror image of the floor plan shown and materials may differ – please ask Keelman Homes for details of your chosen plot.